

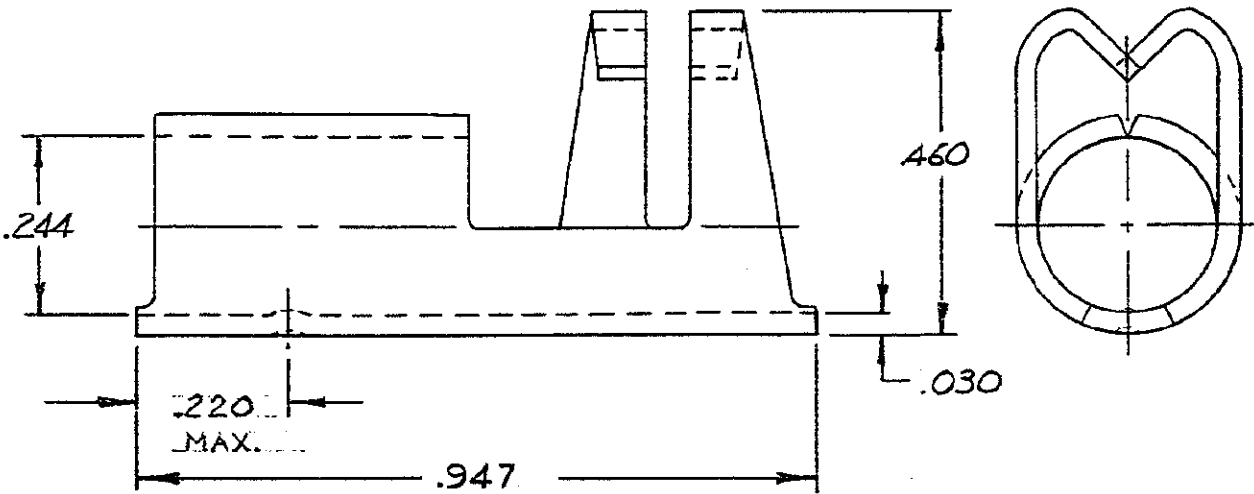
DRAWING MADE IN AMERICAN PROJECTION

LOC **G** PRINT DIST **14 (B)**

© 1947 BY AMP INCORPORATED. ALL RIGHTS RESERVED. AMP PRODUCTS COVERED BY PATENTS AND/OR PATENTS PENDING.

REVISIONS			
LTR	DESCRIPTION	DATE	APPROVED
A	REDRAWN W/O CHANGE	SB 2-16-73	<i>Am</i>
B	REV PER G-1255	UTA 6-5-85	<i>Pjm</i>
C	REV / 0720-0091-93	LO 6/93	<i>ME</i>

34482



8-34482-1	LOOSE PC. BOX	100
34482	LOOSE PC	-
PART NO	PACKAGE TYPE	QTY

UNLESS OTHERWISE SPECIFIED DIMENSIONS ARE IN INCHES  
 TOLERANCES ON:  
 DECIMALS ±.008  
 ANGLES ±5°

MATERIAL  
**BRASS**  
 (MIL-C-50)

CONTRACT NO.	<u>11</u>
DR.	<i>Harry Bail</i> 2-15-73
CHK	<i>Am Enomeng</i> 2-15-73
APPD	<i>Abel</i> 2-16-73
REL	<i>Harry Bail</i> 2-16-73
DSGN APPD	
OTHER APPD	



AMP INCORPORATED  
 HARRISBURG, PENNSYLVANIA

NAME  
**WIRE TERMINAL  
 SPARK PLUG - STRAIGHT-ON  
 WIRE SIZE: 7 MM**

SIZE	CODE IDENT NO.	NUMBER
<b>A</b>	<b>00779</b>	<b>34482</b>

SCALE 4:1 SHEET 1 OF 1